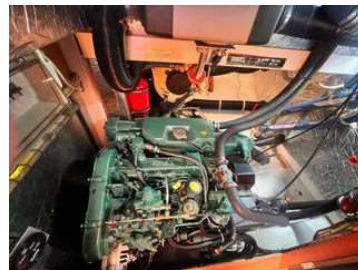


37 ft 2001 Hallberg-Rassy 36, ASPEN

£125,000 Tax: Paid

Portsmouth, Hampshire, United Kingdom

Transworld Yachts



Boat Details

| | | | | | |
|------------|-----------------------|----------------|--------------------------------------------------|---------------|------------------|
| Make: | Hallberg-Rassy | Class: | Cruiser | Guest Cabins: | 2 |
| Model: | 36 | Hull Material: | Fiberglass | Guest Heads: | 1 |
| Year: | 2001 | Drive Type: | Shaft Drive | Fuel Type: | Diesel |
| Length: | 37 ft 1 in | Beam: | 11 ft 8 in | Max Draft: | 5 ft 7 in |
| Price: | £125,000 | Boat Location: | Portsmouth, Hampshire, United Kingdom | | |
| Condition: | Used | Name: | ASPEN | | |



Jonathan Taylor | Transworld Yachts Sailing Ltd

Hamble Point Marina, Southampton, United Kingdom

Tel: +44 (0)23 8045 4000 Fax: +44 (0)23 8045 6406

jonathan@twy.co.uk

Description

ASPEN is a great 2001 **Hallberg-Rassy 36** for sale by first owner and has been enjoyed by her owners for short to medium term cruising along the English Channel and Northern Europe.

Her centre-cockpit layout lends itself perfectly to longer periods afloat. Sailing longer distances seated in the centre of the yacht rather than the back gives extra security and minimises the effects of the yachts movements. Below decks the centre cockpit gives a large accessible engine room and generous owners cabin.

The expert finish of high quality materials is a hallmark for the famous Hallberg-Rassy brand. ASPEN is a strong, practical and well finished cruising yacht of a class that provides exceptional cruising characteristics with a reactively small LOA.

ASPEN boasts a bow thruster for ease of manoeuvring and has been sympathetically modified to bring all mainsail controls back to the cockpit within easy reach of the crew aided by the big primary winches.

Recently relaunched with new antifoul, anodes etc she is ready to go for new owners. Viewings available at Southsea Marina, Portsmouth.

Information & Features

2001 Volvo Penta MD22P (Engine 1)

| | | | | | |
|--------------|--------------------|---------------------|----------------|--------------|-------------|
| Engine Type: | Inboard | Power: | 57 hp | Rope Cutter: | true |
| Fuel Type: | Diesel | Propeller Type: | 3 Blade | | |
| Drive Type: | Shaft Drive | Propeller Material: | Bronze | | |

Dimensions

| | | | |
|-------|-------------------|------------|------------------|
| LOA: | 37 ft 1 in | Max Draft: | 5 ft 7 in |
| LWL: | 30 ft 8 in | | |
| Beam: | 11 ft 8 in | | |

Weights

| | |
|---------------|-----------------|
| Ballast: | 3,400 kg |
| Displacement: | 7,500 kg |

Tanks

| | |
|--------------|------------------------------|
| Fuel: | 345 l Stainless Steel |
| Fresh Water: | 355 l Stainless Steel |
| Holding: | 1 x Stainless Steel |

Accommodations

| | |
|---------------|----------|
| Guest Cabins: | 2 |
| Guest Heads: | 1 |

Other

Fractional
Shares:

1

Builder:

Hallberg-Rassy Varvs AB

Flag Of Registry: **United Kingdom**

Designer: **Germán Frers**

Additional Equipment

- Crane
- Walk Around

Covers

- Cockpit Cover
- Lazy Bag
- Lazyjacks
- Spray Hood

Electrical Equipment

- Shore Power Inlet

Electronics

- AIS
- Autopilot
- CD Player
- Compass
- Depthsounder
- GPS
- Log-Speedometer
- Navigation Center
- Plotter
- Radar
- Radio
- VHF
- Wind Speed and Direction

Inside Equipment

- Battery Charger
- Bow Thruster
- Electric Bilge Pump
- Heating
- Hot Water
- Manual Bilge Pump
- Marine Head
- Oven
- Refrigerator

Outside Equipment/Extras

- Cockpit Table
- Outboard Engine Brackets
- Swimming Ladder
- Teak Cockpit
- Teak Sidedecks

Rigging

- Spinnaker Pole
- Steering Wheel

Sails

- Fully Battened Mainsail
- Furling Genoa
- Storm Jib

Accommodation

All interior woodwork in light mahogany matt silk finish. The floor is in varnished teak with inlaid holly stripes. The saloon ceiling has paneling with mahogany stripes and ceilings in remainder of boat have light lining. Upholstery is in maroon with diamond pattern and resting on unvarnished, well ventilated boards to avoid condensation. Hand holds throughout. The boat is carpeted in blue/grey throughout, except directly in front of the galley, press studs avoid movement. Portholes and skylights are fitted with beige curtains.

MAIN SALOON: A solid mahogany mast support is fitted next to the main bulkhead. The settees offer comfortable seating. The backrests can be lifted to enable total width to be used for sleeping accommodation. Lee cloths on both settee berths. Storage under Starboard side settee. Between the settees is a dropleaf table with bottle stowage in centre section. PIONEER stereo radio/CD player. Plastimo clock and barometer. Blue night lighting for saloon. Headroom in the main saloon 1.91m.

GALLEY: To starboard. Good headroom. Working surface in white laminate with strong all around fiddle rail. Insulated icebox with 12v 'keel-cooled' refrigeration unit with water cooled compressor. Deep, double sink with pressurised hot & cold water. Fresh water foot pump as reserve. OPTIMUS 2-burner gas cooker with oven, gimballed with crash bar and cover. Opening window over the cooker. Crockery locker and cutlery drawer. Bread board. Room for saucepans and other kitchen utensils. Waste bin. Red night lighting.

HEADS COMPARTMENT: Bulkheads and lockers in white laminate. Teak grating, China wash basin and large mirror. Shower curtain. Mixer tap in wash basin is pulled out for shower use. Shower waste drained by pump directly overboard. Pump action sea toilet. Stainless steel holding tank, emptied by gravity. Cupboard above and below washbasin. Ventilation through ventilator, opening porthole and hatch. Headroom 1.87m.

FORWARD CABIN: Two berths with ample stowage above and below and a number of lockers. Infill cushion. Hatch and opening porthole.

CHART TABLE AND WALKTHROUGH: Chart table seat with spacious chart table. Bookshelf. Shelf for mounting navigation instruments. 5 drawers and stowage slots. There is a large rubber sealed 2-door access to the engine room off the walk through. On the port side there is a hanging locker and various cupboards. Electrical switch panel.

AFT CABIN: Aft cabin has a hanging locker and single berth to port and double berth to starboard. Stowage room below and above.

Mechanical and Electrical Systems

VOLVO PENTA MD22P, 4-cylinder diesel engine 57 HP. The engine is freshwater cooled.

3-bladed Brunton feathering propeller with Ambassador rope stripper.

Sliedner 6hp bow thruster, **fitted October 2018**

Mechanical Engine hours counter in engine room

Insulated calorifier with 230v immersion heater.

WEBASTO Airtop 32D diesel heater, thermostatically controlled.

Air outlets in forward cabin, main saloon, heads compartment and aft cabin.

ELECTRICITY:

One 12v battery for engine start.

Three further 12v (110ah) batteries for domestic use on board. The batteries are located under the berth in the aft cabin. Charging of the batteries is via 60A engine driven alternators. **Batteries renewed 2019.**

Electrical switch panel located at the chart table.

Fuel and water gauges, voltmeter.

12v sockets at the chart table, forward cabin and in the cockpit.

Full 230v shore power system with earth leakage device, ring main, immersion heater and Mastervolt battery charger.

Link 10 Battery monitor.

Spars & Sails

Mast, boom, rod kicker with gas spring and standing rigging from Seldén.

Double spreaders, forward and aft lower shrouds.

Removable inner forestay

Backstay tensioner from Seldén.

Aluminium rigging screw protection.

Seldén Furlex 300 S jib furling and reefing system.

Standing rigging renewed with di-form wire 2014.

Outhaul, halyard and reefing lines led aft with jammers on cockpit cowling

Spinnaker pole with track and blocks for stowing pole on mast.

Spinnaker halyard.

Steaming light and deck flood.

Pocket for winch handle.

Two Lewmar 16 CST self tailing halyard winches on mast.

Mast is deck stepped. Main boom with outhaul and 3 reefing lines.

SAILS:

Fully battened mainsail with lazy jacks and stack pack system

Furling 140% Radial Roller Genoa with UV strip and foam luff rope from Sanders Sails. **New Nov 2001.**

Original Elvstrom Genoa in excellent condition

Storm jib

Deck Equipment

Teak deck, bathing platform and cockpit seats in 12 mm teak laid in rubber. Toe rail, hand rails and all other woodwork on deck in solid teak.

Stemhead fitting with twin bow rollers.

45 lbs CQR anchor with 50m 8mm chain.

LEWMAR OCEAN 1 electric anchor windlass with deck buttons on foredeck.

Self-draining chain locker.

Mooring cleats forward, aft and midships.

Protective brass strips to all cleats.

4 skylights and 9 port holes, four of which opening.

2 Dorade ventilators in saloon.

One Electrolux-type ventilator forward and one in head.

Deck screw caps for filling water and diesel.

On starboard side deck is the dedicated self-draining gas bottle locker.

Full width lazarette locker for warps and fenders, etc.

On the starboard side is the cockpit locker with good stowage.

Guard rails, pulpit and pushpit, all in stainless steel.

Gates in guard wires Port and Starboard

International navigation lights.

Combined anchor/tricolour light at masthead.

Bathing ladder for the platform.

Outboard bracket

Crane for outboard

Mainsheet track behind cockpit.

Sheet winches LEWMAR 48 CST self-tailing.

Two ST30 winches at aft end of cockpit

Hide covered steering wheel and steering pedestal.

On both sides of sliding hatch are useful teak covered outer chart tables with fiddle rails.

The windscreen is made of tempered glass with opening centre section.

Sprayhood

Handholds in the side panels.

The sprayhood and extension to cover entire cockpit.

Teak floor grating in forward section of cockpit.

Navigation Equipment

Sunto steering compass
Standard Horizon GPS chart CP300i under windscreen
Three B&G Triton 2 instruments over companionway, **New Oct 2019**
B & G Triton 2 instrument at steering pedestal, **New Oct 2019**
Simrad Autopilot control at Steering pedestal

At chart table;
Raytheon RL70 chart plotter (for use with Radar)
Garmin GPS 120/
B&G Triton 2 instrument
ICS Nav6 Navtex
Sailor VHF handset
Simrad AIS transceiver

Safety Equipment

All safety equipment is sold as seen with no guarantees or warranties. Transworld Yachts recommends all safety equipment is tested and/or inspected by a qualified technician and its suitability for intended use evaluated.

PLASTIMO gas alarm
Horseshoe lifebuoys
Electric bilge pump
3x Fire extinguishers

Disclaimer

Transworld Yachts offers the details of this vessel in good faith but cannot guarantee or warrant the accuracy of this information nor warrant the condition of the vessel. A buyer should instruct his agents, or his surveyors, to investigate such details as the buyer desires validated. This vessel is offered subject to prior sale, price change, or withdrawal without notice.

Default Disclaimer

Transworld Yachts offers the details of vessels in good faith but cannot guarantee or warrant the accuracy of this information nor warrant the condition of any vessel. A buyer should instruct his agents, or his surveyors, to investigate such details as the buyer desires validated. All vessels are offered subject to prior sale, price change, or withdrawal without notice.



















